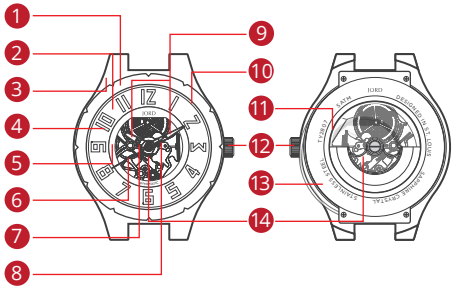


PRODUCT BREAKDOWN



- 1. Steel Bezel
- 2. Concave dial
- 3. Wood casing
- 4. Numeral Indices
- 5. Inner dial
- 6. Second Hand
- 7. Hour Hand
- 8. Minute Hand
- 9. Lume
- 10. Sapphire Crystal
- 11. crown
- 12. Exhibition Window
- 13. Backplate
- 14. Mechanical Movement

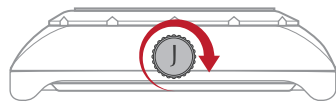
QUICK START GUIDE



Position 1 (pressed in)
For when being worn, winding, and maximum water resistance.

Position 2 (pulled out)
For adjusting time.

TO WIND THE WATCH



Before being worn for the first time, or if it has fully stopped, the Dover II watch must be wound manually in order to function correctly. To wind the watch manually, turn the pressed in winding crown clockwise. (Turning in the other direction has no effect.) A minimum of 15-20 turns is required for adequate partial winding. The watch will then be wound automatically as long as it is worn on the wrist.

WARNING - Overwinding watch can damage movement.

ADJUSTING TIME



Position 2 (pulled out)
Turn either clockwise or counterclockwise to adjust time by the minute.

1. When the second hand is pointing to 12 o'clock, pull the crown to Position 2 to stop/adjust the time.
 2. Turn the crown counter-clockwise to adjust backward and clockwise to adjust forward by the minute.
- * Winding the watch before adjusting the time is recommended.

KEEPING WATCH POWERED



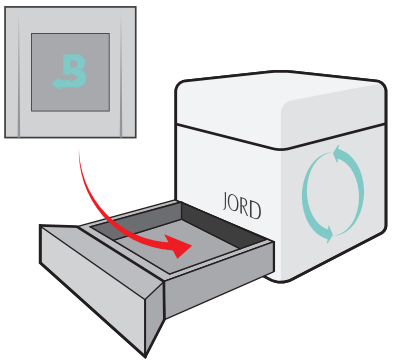
Pendulum
Rotates as you move winding your watch.

By wearing this watch, it will wind itself throughout the day as you move. Unlike manual winding using the crown, winding through movement of the pendulum will not overwind your timepiece. This watch does not have a battery and will stop functioning when power reserve is depleted. Simply follow the previous steps to restore watch functions.

PRODUCTS FOR WATCH CARE

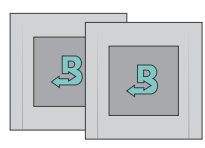
HUMIDOR

Our innovative and functional red cedar box is created to offer a humidity controlled environment for your wood time-pieces. To enable the humidor capability, place a humidity control pack in the bottom drawer for ideal moisture control and watch storage.



Purchase at <https://www.jord.co/care/cedar>

BOVEDA HUMIDITY PACK
(Sold in pack of 2)



Purchase at <https://www.jord.co/care>

Each 2-way humidity pack ensures optimal conditions for the storage of your watch. Fits perfectly in the drawer of your cedar valet watch box.

A single Boveda pack can last as up to a year depending on how often the box is opened. The pack will need replacing when it is dry and "crispy" and no soft spots remain.

WATER RESISTANCE

The Dover II (non-RIST) is splash resistant. While the steel core is water resistant up to 5ATM with the crown pushed in, it should be noted that the wood does not handle water nearly as well. Prolonged exposure to moisture or water submersion should be avoided if at all possible. Wood is susceptible to water damage as moisture can cause expansion. This can potentially result in link failure and deterioration the exterior finish.

PROPER STORAGE



WARNING - Extreme conditions can damage wood.

With proper care and maintenance, your wood watch can be worn and enjoyed as long as you care for it properly when not in use.

Wood is susceptible to sudden and extreme changes in temperature and humidity. Putting stress on wood can lead to swelling and cracking. It is important to store your watch properly when not being worn.

Ideal conditions are:
Not in direct sunlight
30-60% Humidity
55-85 °F

RELATED LINKS

- For more JORD products : www.JORD.co
- Register your watch at : <https://www.jord.co/register>
- Purchase Boveda Humidity Pack : <https://www.jord.co/care>
- Purchase Humidor Watch Box : <https://www.jord.co/care/cedar>
- Purchase additional watch links : <https://www.jord.co/additional-links>
- Steel Core : <https://www.jord.co/materials/steelcore>
- Warranty, Returns, & RMAs : <https://www.jord.co/warranty>